

Thank you for your order!

First, some notes before you begin the installation;

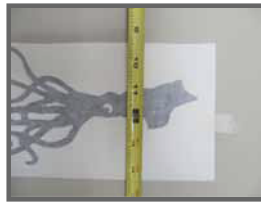
- If you have purchased an automotive vinyl item, specific instructions can be found on the bottom of that item's order page.
- Our high quality vinyl is intended to be installed on a smooth, flat surface. Slight curves and textures are okay.
- The vinyl is removable, but not intended to be reusable. (Photo Tex printed wall fabric is reusable)
- Air bubbles formed during application can be popped with a pin and then removed by pressing with your finger to release the air.
- Surface should be clean and dry.



1) You will need a squeegee or similar tool, masking tape and possibly a tape measure.



2) Using a tab of masking tape at each end, position vinyl on your surface.



3) If you wish to align your graphic with another object or check for level, use a tape measure now. ✖ See Below



4) When you have your vinyl in the desired position, use a strip of masking tape along one edge to create a hinge.



5) Rip the opposite tape tab leaving one half on the wall and the other on the graphic for re-alignment purposes.



6) Slowly and carefully pull the graphic from the backing layer. Do not let it fold onto itself or the wall.



7) Using the tape tab you left on the wall, line up the image against the wall.



8) Use a squeegee or similar tool to firmly burnish the vinyl into place on the wall.



9) Slowly pull back the masking layer at a 180° angle. If the graphic starts to peel up, re-burnish and try again.



10) Sit back and enjoy your new wall art!

*** Stop after Step 3 and follow these remaining instructions for using a center hinge on graphics larger than 36"**



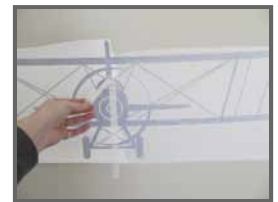
A) After you position your graphic, apply a strip of masking tape down the middle. (This also works for tall graphics to use a horizontal tape hinge)



B) Slowly and carefully pull the graphic from the backing paper.



C) Use a scissors to cut the backing paper away from this half of the graphic only. The masking tape hinge will hold the graphic in place.



D) Squeegee the first half of the graphic onto your surface (Step 8 above), remove the center hinge and repeat Step D on the second half. No need to cut the masking this time, just peel it away. Return to Steps 9 & 10 to complete the installation.

Questions, comments or concerns? Let us know: